



THE
SPRAY NOZZLE
PEOPLE

HYDROWHIRL®
POSEIDON®

Rotary Tank Wash
PTFE



TANK WASH

DESIGN FEATURES

- ✓ Cleans more quickly and uses less water and lower pressure than static tank washers
- ✓ PTFE construction:
 - Ideal for harsh chemical environments
 - Corrosion resistant
- ✓ Available in threaded, pipe, tube, or DIN clip-on connections
- ✓ Made from FDA compliant materials for use in Clean-In-Place (CIP) applications

SPRAY CHARACTERISTICS

- ✓ Slow spinning produces longer spray dwell time on the target surface, increasing impact over conventional rotating designs
- ✓ Complete 360° omnidirectional spray pattern, other spray angels available upon request
- ✓ Flow rates: 14.3 to 307 l/min



The HydroWhirl Poseidon is an all-PTFE tank cleaning head which means it is suitable for use in highly corrosive and aggressive environments as PTFE is one of the most chemically inert compounds.

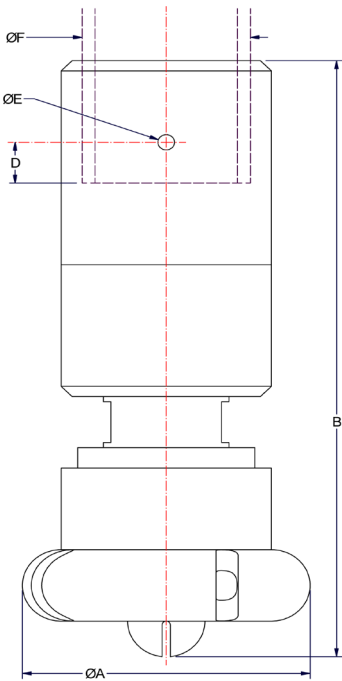
The HWP's rotation is powered by the cleaning fluid and its slow rotation gives a robust clean for medium sized tanks.

It is not recommended for applications over 4 bar.

CALL NOW : +44 (0) 1273 400092

www.spray-nozzle.co.uk

The Go-to People for spray nozzle solutions



HydroWhirl® Poseidon® Connections and Dimensions

Connection Type	Nozzle Number											
	HPW-10			HPW-32 HWP-28			HWP-32 HWP-37			HWP-48 HWP-55 HWP-65 HWP-73		
FNPT/BSP	1/4"	3/8"	1/2"	3/8"	1/2"	3/4"	1/2"	3/4"	1"	1"	1 1/4"	1 1/2"
Pipe Clip-On							X					
Dim F (mm)	13.7	17.3	21.3	17.3	21.3	26.7	21.3	26.7	33.5	33.5	42.2	48.3
Tube Clip-On	1/2"	3/4"		3/4"	1"		1"	1 1/4"		1 1/2"	1 3/4"	
Dim F (mm)	12.7	19.1		19.1	25.4		25.4	38.1		38.1	44.5	
DIN Clip On (DIN 11866 Part A)	DN10	DN15		DN15	DN20		DN20	DN25			DN40	
Dim F (mm)	13	19		19	23		23	29			41	

HydroWhirl® Poseidon® Nozzle Flow Rates & Dimensions

Standard Materials: PTFE (nozzle), 316 Stainless Steel (retaining clip)

Nozzle Number	Spray Angle	Litres Per Minute @ BAR						Dimensions				Mass (g)	Coverage Diameter (m)
		0.5 BAR	1 BAR	1.5 BAR	2 BAR	3 BAR	4 BAR	A	B	D	E		
HWP-10	360°	14.3	20.3	24.9	28.8	35.4	40.9	42.7	100.1	12.7	2.4	85	2.7
HWP-23		30.3	43.1	52.9	61.2	75.2	87	49.5	104.6	12.7	4.1	113	3.4
HWP-28		34.6	49	60	69.3	84.9	98						
HWP-32		37.5	53.8	66.5	77.2	95.4	111	76.2	162.6	12.7	4.8	595	4.3
HWP-37		48.5	69.2	85.2	98.7	122	141						
HWP-48		66	94	116	134	165	191	83.8	184.4	12.7	4.8	822	7.3
HWP-55		75.4	107	132	153	188	218						
HWP-65		98.7	140	171	198	243	281						
HWP-73		108	153	187	216	265	307						7.6