



THE
SPRAY NOZZLE
PEOPLE

NCFL

Flange Connection
Plastic Material



FULL CONE

DESIGN FEATURES

- ✓ Large internal passages
- ✓ Uniform spray coverage
- ✓ High flow rates with coarse atomisation
- ✓ Variety of polymer materials available, offering high corrosion resistance
- ✓ For metal alloy nozzles refer to SC and TC

SPRAY CHARACTERISTICS

- ✓ Spray pattern: Full Cone
- ✓ Spray angles: 60°, 90°, and 120°
- ✓ Flow rates: 350 to 19700 l/min (Special flow rates available)



The NCFL nozzle is a high flow rate full cone nozzle with coarse atomisation. It is the flanged version of the NC nozzle. It has an all plastic design for maximum chemical compatibility. With a wide range of sizes and spray angles the NC is used in applications such as:

Absorber Sprays
Deluge Cooling
Packed Bed Fluid Distribution
Gas Scrubbing
Parts Washing
And many more.

CALL NOW : +44 (0) 1273 400092

www.spray-nozzle.co.uk

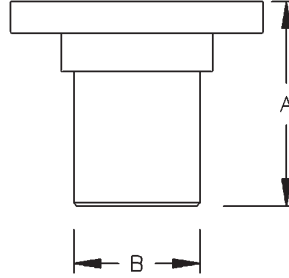
The Go-to People for spray nozzle solutions



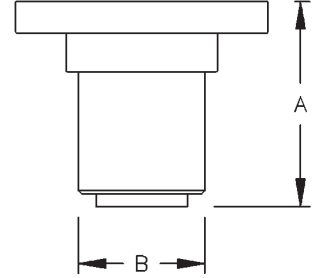
Full cone 60° (N)



Full cone (120°) W



Flanged



Flanged 120°C

NCFL Flow Rates and Dimensions

Full Cone, Narrow 60° (N), Medium 90° (M) and Wide 120° (W) Spray Angles, Flanged Connection, BSP or NPT
Standard materials: PVC, Polypropylene and PTFE (12" NCFL not available in PTFE)

| Pipe Size | Nozzle No. | K Factor | Litres per minute @ BAR | | | | | | | | Orifice Dia (mm) | Free Pass (mm) | Dims (mm) | | Wt (kg) |
|-----------|------------------|----------|-------------------------|---------|---------|---------|---------|-------|---------|-------|------------------|----------------|-----------|-----|---------|
| | | | 0.2 BAR | 0.3 BAR | 0.4 BAR | 0.5 BAR | 0.7 BAR | 1 BAR | 1.5 BAR | 2 BAR | | | A | B | |
| 4" | NCFL40140 | 746 | 350 | 424 | 485 | 539 | 631 | 746 | 903 | 1030 | 37.6 | 25.4 | | | |
| | NCFL40180 | 959 | 450 | 545 | 624 | 693 | 811 | 959 | 1160 | 1330 | 42.9 | 33.3 | 149 | 114 | 3.63 |
| | NCFL40250 | 1330 | 625 | 757 | 866 | 962 | 1130 | 1330 | 1610 | 1850 | 50.3 | 40.1 | | | |
| 6" | NCFL60350 | 1860 | 876 | 1060 | 1213 | 1350 | 1580 | 1860 | 2260 | 2580 | 60.5 | 43.2 | | | |
| | NCFL60480 | 2560 | 1200 | 1450 | 1663 | 1850 | 2160 | 2560 | 3100 | 3540 | 69.9 | 44.5 | 254 | 168 | 6.35 |
| | NCFL60615 | 3280 | 1540 | 1860 | 2131 | 2370 | 2770 | 3280 | 3970 | 4540 | 79 | 50 | | | |
| 8" | NCFL80665 | 3540 | 1660 | 2010 | 2300 | 2560 | 3000 | 3540 | 4290 | 4910 | 82.6 | 53.8 | | | |
| | NCFL80775 | 4130 | 1940 | 2350 | 2690 | 2980 | 3490 | 4130 | 5000 | 5720 | 89.4 | 60.5 | 305 | 219 | 11.8 |
| | NCFL80885 | 4720 | 2210 | 2680 | 3070 | 3410 | 3990 | 4720 | 5710 | 6530 | 95.3 | 66.5 | | | |

Flow Rate (l/min) = K (bar)^{0.47}