



THE
SPRAY NOZZLE
PEOPLE

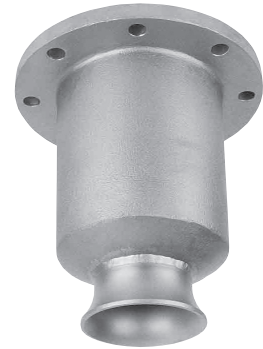
TC

Highest flow rate/
Metal alloy Line

FULL CONE

DESIGN FEATURES

- ▼ One-piece body with integral vanes
- ▼ Male, female, and flanged connections available



SPRAY CHARACTERISTICS

- ▼ Extremely high flow rates
- ▼ Spray pattern: Full Cone
- ▼ Spray angles: 60°, 90°, and 120°
- ▼ Flow rates: 976 to 36100 L/min (Special flow rates available)

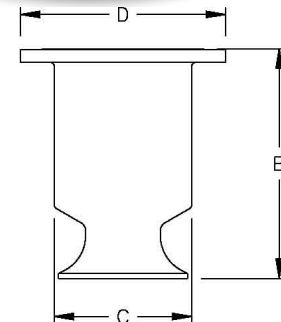
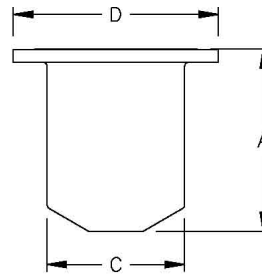
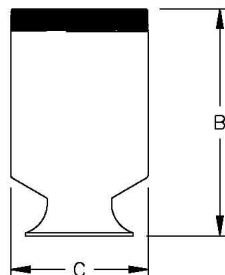
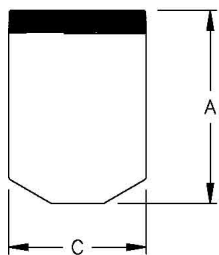
The TC is a large, very high flow rate range of nozzles. It comes with either a male/female thread or a flanged connection. The spray produced is a coarsely atomised full cone pattern. The TC nozzle would be used in applications requiring very high flow rates including:

Deluge Cooling
Packed Bed Distribution
Very Large Foam Control
And more.

CALL NOW : +44 (0) 1273 400092

www.spray-nozzle.co.uk

The Go-to People for spray nozzle solutions



Full Cone 90'(M)

Male 60'/90'

Male 120'

60'/90' Flanged

120' Flanged

TC Flow Rates and Dimensions

Full Cone, Narrow 60° (N), Medium 90° (M) and Wide 120° (W) Spray Angles, 6" to 12" Pipe Sizes, BSP or NPT, 12" Flanged

Model No.	Spray Angles	K	Flow rate at bar								Dimensions (mm)				(kg)	
			0.1 bar	0.3 bar	0.5 bar	0.7 bar	1 bar	2 bar	3 bar	5 bar	Free Pass	A	B	C		D
TC532	60°, 90°	2820	976	1620	2050	2390	2820	3870	4670	5900		259		168		
TC588	90°	3110	1080	1790	2260	2640	3110	4280	5160	6520	44.5	259		168		11.3
TC827	90°, 120°	4380	1520	2520	3180	3710	4380	6020	7250	9180		260	313	168		
TC962	60°	5090	1770	2930	3700	4320	5090	7000	8440	10700		324		219		
TC1120	90°, 120°	5930	2060	3410	4310	5030	5930	8150	9820	12400		324	389	219		
TC1260	90°, 120°	6670	2310	3830	4850	5660	6670	9170	11100	14000	52.3	324	389	219		18.1
TC1480	120°	7830	2720	4500	5690	6650	7830	10800	13000	16400			389	219		
Flanged Connection																
TCFL532	60°	2820	976	1620	2050	2390	2820	3870	4670	5900		238		168	279	
TCFL588	90°	3110	1080	1790	2260	2640	3110	4280	5160	6520	44.5	238		168	279	27.2
TCFL827	90°, 120°	4380	1520	2520	3180	3710	4380	6020	7250	9180		238	292	168	279	
TCFL962	60°, 90°	5090	1770	2930	3700	4320	5090	7000	8440	10700		303		219	343	
TCFL1120	90°, 120°	5930	2060	3410	4300	5030	5930	8150	9820	12400		303	373	219	343	
TCFL1260	90°, 120°	6670	2310	3830	4850	5660	6670	9170	11100	14000	52.3	303	373	219	343	38.6
TCFL1480	90°, 120°	7830	2720	4500	5690	6650	7830	10800	13000	16400		303	373	219	343	
TCFL2070	60°	11000	3800	6300	7960	9300	11000	15100	18200	23000		432			483	
TCFL2360	90°	12400	4310	7150	9040	10600	12400	17100	20600	26100		432			483	
TCFL2510	90°, 120°	13300	4610	7630	9660	11300	13300	18300	22000	27800		432	543	323	483	
TCFL2660	90°, 120°	14100	4880	8090	10200	11900	14100	19400	23300	29500	57.2	432	543	323	483	72.6
TCFL2960	90°, 120°	15700	5430	9000	11400	13300	15700	21500	26000	32800		432	543	323	483	
TCFL3250	90°	17200	5960	9880	12500	14600	17200	23700	28500	36100		432			483	