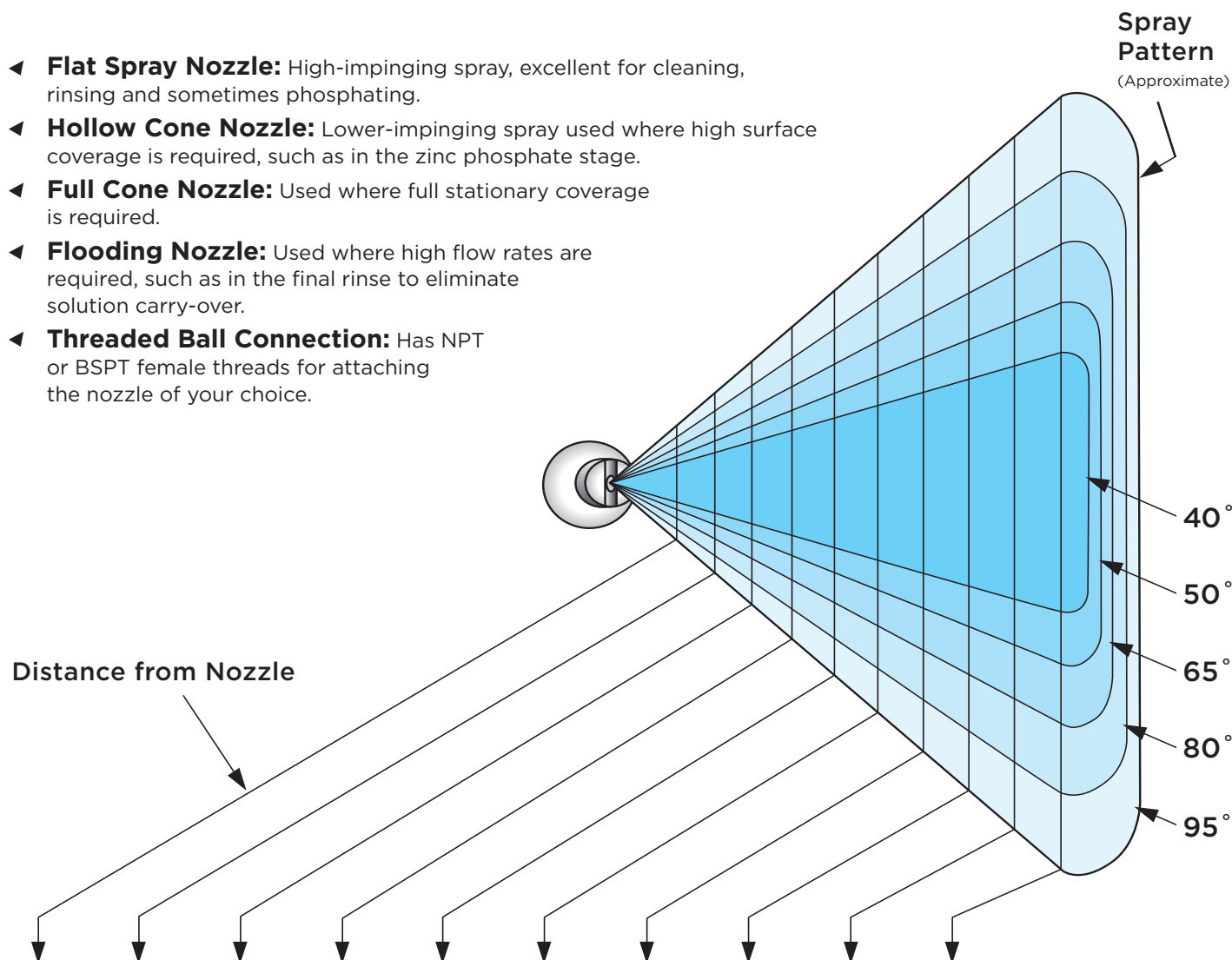


UNI-SPRAY NOZZLE TIPS: SPRAY NOZZLE COVERAGE

- ◀ **Flat Spray Nozzle:** High-impinging spray, excellent for cleaning, rinsing and sometimes phosphating.
- ◀ **Hollow Cone Nozzle:** Lower-impinging spray used where high surface coverage is required, such as in the zinc phosphate stage.
- ◀ **Full Cone Nozzle:** Used where full stationary coverage is required.
- ◀ **Flooding Nozzle:** Used where high flow rates are required, such as in the final rinse to eliminate solution carry-over.
- ◀ **Threaded Ball Connection:** Has NPT or BSPT female threads for attaching the nozzle of your choice.



HEIGHT OF INCLUDED ANGLE OF SPRAY COVERAGE (CM)

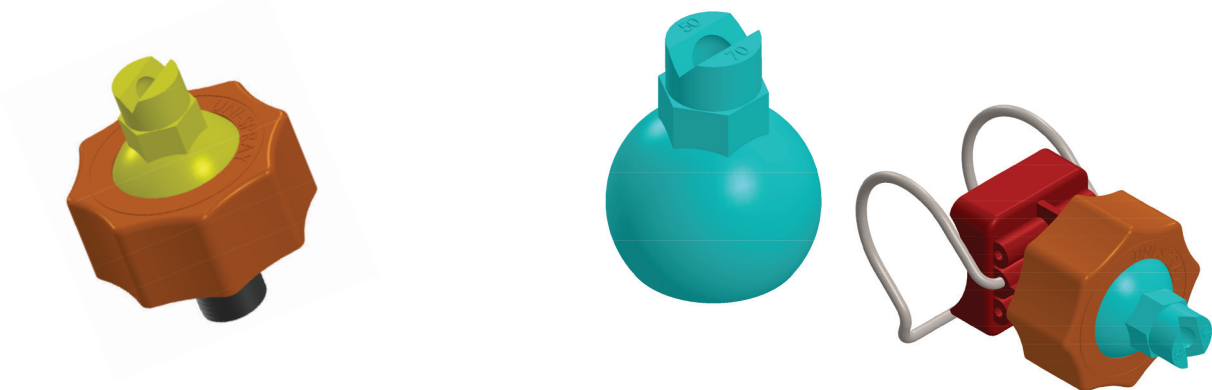
10 cm	15 cm	20 cm	25 cm	30 cm	40 cm	50 cm	60 cm	75 cm	90 cm	@ Spray Angle
7.6	11.4	14.5	18.2	21.7	29.1	36.4	43.7	54.5	65.5	40°
9.4	14.2	18.8	23.2	28.0	37.3	46.7	56.0	70.0	84.1	50°
12.4	19.1	25.5	31.7	38.2	51.2	63.6	76.2	95.5	114.6	65°
17.0	25.4	33.5	42.0	50.5	67.2	84.2	100.7	126.0	151.1	80°
21.8	33.0	43.8	54.5	65.5	87.5	109.2	131.0	163.7	196.6	95°

FLAT SPRAY NOZZLE TIP SELECTION DATA

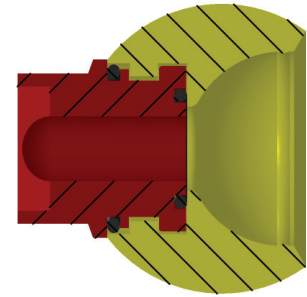
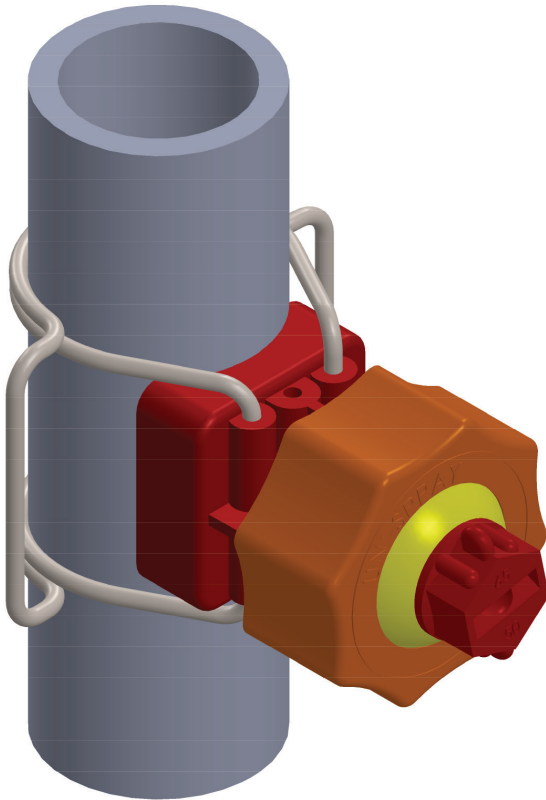
ITEM NO.	NOZZLE TIP PART NUMBER	TIP COLOUR	SPRAY ANGLE	SPRAY PATTERN	CAPACITY LPM AT BAR					
					0.5	0.7	1	2	3	5
001	UNI 0080	Dk. Green	0°	Flat Spray	12.92	15.30	18.28	25.84	31.65	40.86
002	UNI 3040	Black	30°	Flat Spray	6.59	7.80	9.32	13.18	16.14	20.84
003	UNI 4050	Dk. Green	40°	Flat Spray	8.17	9.67	11.56	16.34	20.02	25.84
004	UNI 4020	Turquoise	40°	Flat Spray	3.16	3.74	4.47	6.32	7.75	10.00
005	UNI 50100	Grey	50°	Flat Spray	16.09	19.04	22.75	32.17	39.40	50.87
006	UNI 5070	Blue	50°	Flat Spray	11.34	13.42	16.04	22.68	27.78	35.86
007	UNI 5060	Orange	50°	Flat Spray	9.76	11.55	13.80	19.52	23.91	30.86
008	UNI 5050	Pink	50°	Flat Spray	8.17	9.67	11.56	16.34	20.02	25.84
009	UNI 5040	Mauve	50°	Flat Spray	6.59	7.80	9.32	13.18	16.14	20.84
010	UNI 5030	Blue	50°	Flat Spray	4.74	5.62	6.71	9.49	11.62	15.00
011	UNI 5020	Lt. Green	50°	Flat Spray	3.16	3.74	4.47	6.32	7.75	10.00
012	UNI 6560	Green	65°	Flat Spray	9.76	11.55	13.80	19.52	23.91	30.86
013	UNI 6550	Red	65°	Flat Spray	8.17	9.67	11.56	16.34	20.02	25.84
014	UNI 6540	Yellow	65°	Flat Spray	6.59	7.80	9.32	13.18	16.14	20.84
015	UNI 6530	Purple	65°	Flat Spray	4.74	5.62	6.71	9.49	11.62	15.00
016	UNI 6520	Grey	65°	Flat Spray	3.16	3.74	4.47	6.32	7.75	10.00
017	UNI 8070	Beige	80°	Flat Spray	11.34	13.42	16.04	22.68	27.78	35.86
018	UNI 8060	Beige	80°	Flat Spray	9.76	11.55	13.80	19.52	23.91	30.86
019	UNI 8050	Dk. Green	80°	Flat Spray	8.17	9.67	11.56	16.34	20.02	25.84
020	UNI 8040	Beige	80°	Flat Spray	6.59	7.80	9.32	13.18	16.14	20.84
021	UNI 8010	Black	80°	Flat Spray	1.58	1.87	2.24	3.16	3.87	5.00
022	UNI 8006	Lt. Green	80°	Flat Spray	0.98	1.15	1.38	1.95	2.39	3.08
023	UNI 9560	Dk. Green	95°	Flat Spray	9.76	11.55	13.80	19.52	23.91	30.86
024	UNI 12010	Grey	120°	Flat Spray	1.58	1.87	2.24	3.16	3.87	5.00
025	UNI 12070	Black	120°	Flat Spray	11.34	13.42	16.04	22.68	27.78	35.86
026	UNIPLUG	Grey	PLUG TO BLANK-OFF SPRAY							

For easy identification, all Flat Spray Nozzle Tips have the Tip Numbers molded into the ends of the tips. When ordering Nozzle Tips as spare parts, add TIP after the part Number: e.g., **UNI 6540TIP**

CUSTOM NOZZLE DESIGNS ARE AVAILABLE UPON REQUEST



UNI-SPRAY QUICK-CHANGE NOZZLE TIP



The “Quik-Change” Nozzle Tip is installed with a bayonet mount, and a simple 90° twist is all it takes to lock it into the ball. It is O-Ring sealed at the bottom and lip sealed at the top to prevent the mounting slots and tabs from becoming contaminated and difficult to disassemble.

The exterior dimensions and contours of the ball are identical to our standard Adjustable Nozzle Tips, so the full range of adjustment is still available. However, the tip length has been shortened from that of our standard tips, providing even greater clearance between the spray nozzle and your product.

The Uni-Spray Systems’ Quik-Change Tip has been developed to meet our customers’ demands! Manufactured to exacting standards from the highest-quality engineered thermoplastics, the Quik-Change Tip demonstrates our ongoing commitment to research and development, high-performance replacement parts and innovative new products for the pretreatment industry worldwide.

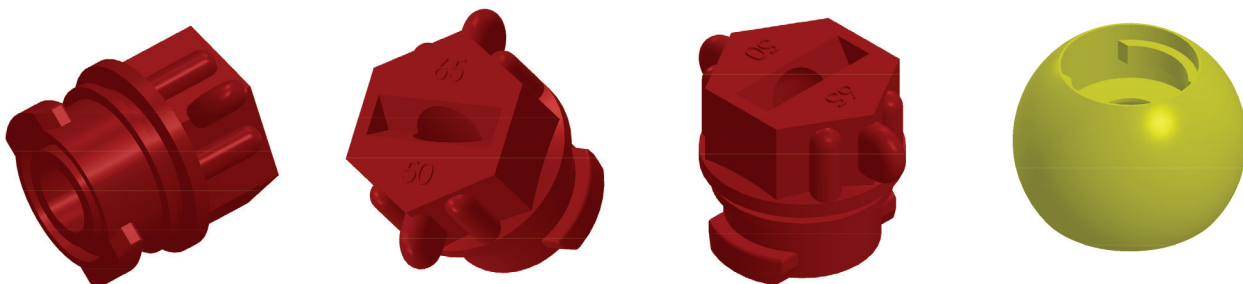
Quik-Change Tips will greatly reduce maintenance downtime by allowing replacement of all the tips in your system without having to painstakingly realign the adjustable tip angles and orientations on every nozzle. Quick-Change Tips are available in various Flat Spray Tip configurations. Custom spray angles and flow requirements are also available.

QUICK-CHANGE NOZZLE TIP SELECTION DATA

ITEM NO.	NOZZLE TIP PART NUMBER	TIP COLOUR	SPRAY ANGLE	SPRAY PATTERN	CAPACITY (US) LPM AT BAR					
					0.5	0.7	1	2	3	5
027	UNI 0080QC	Dk. Green	0°	Flat Spray	12.92	15.30	18.28	25.84	31.65	40.86
028	UNI 1550QC	Pink	15°	Flat Spray	7.91	9.37	11.19	15.83	19.38	25.03
029	UNI 50100QC	Grey	50°	Flat Spray	16.09	19.04	22.75	32.17	39.40	50.87
030	UNI 5070QC	Blue	50°	Flat Spray	11.34	13.42	16.04	22.68	27.78	35.86
031	UNI 5060QC	Orange	50°	Flat Spray	9.76	11.55	13.80	19.52	23.91	30.86
032	UNI 5050QC	Pink	50°	Flat Spray	8.17	9.67	11.56	16.34	20.02	25.84
033	UNI 65100QC	Lt. Green	65°	Flat Spray	16.09	19.04	22.75	32.17	39.40	50.87
034	UNI 65700QC	Red	65°	Flat Spray	11.34	13.42	16.04	22.68	27.78	35.86
035	UNI 6560QC	Green	65°	Flat Spray	9.76	11.55	13.80	19.52	23.91	30.86
036	UNI 6550QC	Red	65°	Flat Spray	8.17	9.67	11.56	16.34	20.02	25.84
037	UNI 6540QC	Yellow	65°	Flat Spray	6.59	7.80	9.32	13.18	16.14	20.84
038	UNI 6530QC	Purple	65°	Flat Spray	4.74	5.62	6.71	9.49	11.62	15.00
039	UNI 8070QC	Beige	80°	Flat Spray	11.34	13.42	16.04	22.68	27.78	35.86
040	UNI 8050QC	Dk. Green	80°	Flat Spray	8.17	9.67	11.56	16.34	20.02	25.84
041	UNI 8040QC	Beige	80°	Flat Spray	6.59	7.80	9.32	13.18	16.14	20.84
042	UNI 8020QC	Yellow	80°	Flat Spray	3.16	3.74	4.47	6.32	7.75	10.00
043	UNI 8010QC	Black	80°	Flat Spray	1.58	1.87	2.24	3.16	3.87	5.00
044	UNI 8006QC	Lt. Green	80°	Flat Spray	0.98	1.15	1.38	1.95	2.39	3.08
045	UNI 9540QC	Black	95°	Flat Spray	6.59	7.80	9.32	13.18	16.14	20.84
046	UNI 9530QC	Grey	95°	Flat Spray	4.74	5.62	6.71	9.49	11.62	15.00
047	UNI 9520QC	Red	95°	Flat Spray	3.16	3.74	4.47	6.32	7.75	10.00
048	UNI 9503QC	Orange	95°	Flat Spray	47.37	56.07	67.00	94.73	116.04	149.80
049	UNI 12010QC	Grey	120°	Flat Spray	1.58	1.87	2.24	3.16	3.87	5.00
050	UNI 12070QC	Black	120°	Flat Spray	11.34	13.42	16.04	22.68	27.78	35.86
051	UNI 29HCQC	Dk. Green	50°	Hollow Cone	9.23	10.93	13.05	18.46	22.61	29.19
052	UNI 50HCQC	Black	65°	Hollow Cone	15.82	18.73	22.37	31.64	38.75	50.03
053	UNIPLUGQC	Grey	PLUG TO BLANK OFF SPRAY							

For easy identification, all Flat Spray Nozzle Tips have the Tip Numbers molded into the ends of the tips. When ordering Nozzle Tips as spare parts, add QCTIP after the Part Number: e.g., **UNI 6540QCTIP**

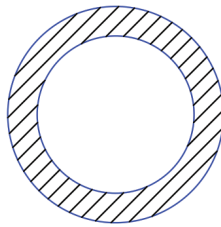
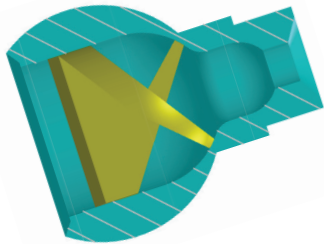
CUSTOM NOZZLE DESIGNS ARE AVAILABLE UPON REQUEST



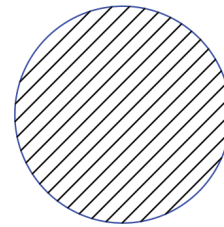
HOLLOW CONE/FULL CONE NOZZLE TIP SELECTION DATA

ITEM NO.	NOZZLE TIP PART NUMBER	TIP COLOUR	SPRAY ANGLE	SPRAY PATTERN	CAPACITY (US) LPM AT BAR					
					0.5	0.7	1	2	3	5
054	UNI 29 HC	Dk. Green	50°	Hollow Cone	9.40	11.13	13.30	18.81	23.04	29.74
055	UNI 50 HC	Black	65°	Hollow Cone	15.82	18.73	22.37	31.64	38.75	50.03
056	UNI 08 HC	Blue	90°	Hollow Cone	2.38	2.81	3.36	4.75	5.82	7.51
057	UNI 20 HC	Orange	65°	Hollow Cone	6.33	7.49	8.95	12.65	15.49	20.00
058	UNI 25 HC	Red	65°	Hollow Cone	6.86	8.11	9.69	13.71	16.79	21.68
059	UNI 35 HC	Blue	65°	Hollow Cone	11.61	13.74	16.41	23.21	28.43	36.70
060	UNI 16 FC	Turquoise	40°	Full Cone	5.01	5.93	7.08	10.02	12.27	15.84
061	UNI 17 FC	Yellow	80°	Full Cone	5.27	6.24	7.46	10.55	12.92	16.68
062	UNI 52 FC	Pink	65°	Full Cone	16.35	19.35	23.12	32.70	40.05	51.70

CUSTOM NOZZLE DESIGNS ARE AVAILABLE UPON REQUEST



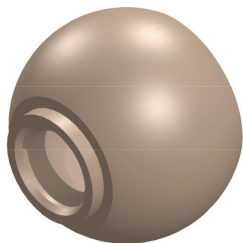
Hollow Cone Pattern



Full Cone Pattern

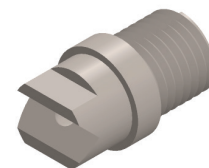
THREADED BALL SELECTION DATA

064	UNI 1/8 BSPT	Beige	1/8" BSPT FEMALE THREADED CONNECTION
066	UNI 1/4 BSPT	Beige	1/4" BSPT FEMALE THREADED CONNECTION
068	UNI 3/8 BSPT	Beige	3/8" BSPT FEMALE THREADED CONNECTION
070	UNI 1/2 BSPT	Beige	1/2" BSPT FEMALE THREADED CONNECTION

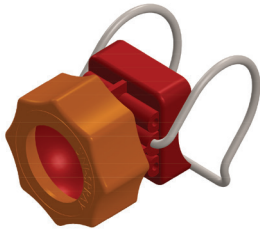


Uni-Spray also carries a large line of threaded nozzles for every application. Materials ranging from PVC to stainless steel are available in many thread sizes.

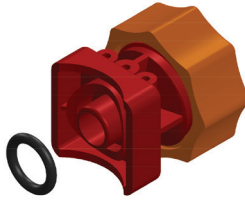
PLEASE CALL TO DISCUSS A NOZZLE FOR YOUR SPECIFIC APPLICATION.



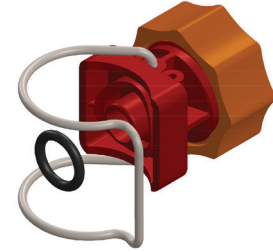
SPRAY NOZZLE COMPONENTS



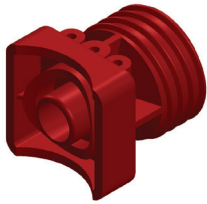
MARK 1 ASSEMBLY (NO TIP) SINGLE CLAMP
UNI 100 BSOC
UNI 125 BSOC
UNI 150 BSOC
UNI 200 BSOC



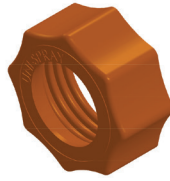
MARK 1 BODY, CAP AND O-RING
UNI 100 BCO
UNI 125 BCO
UNI 150 BCO
UNI 200 BCO



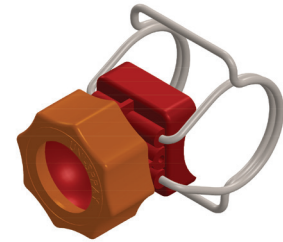
MARK 1 BODY, SINGLE CLAMP AND O-RING
UNI 100 BCO
UNI 125 BCO
UNI 150 BCO
UNI 200 BCO



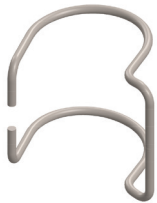
MARK 1 BODY ONLY
UNI 100 B
UNI 125 B
UNI 150 B
UNI 200 B



MARK 1 CAP
UNI RC



MARK 1 ASSEMBLY (NO TIP) DOUBLE CLAMP
UNI 100 BSOC
UNI 125 BSOC
UNI 150 BSOC
UNI 200 BSOC



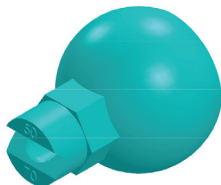
MARK 1 OR MARK 2 SINGLE CLAMP
UNI 100 SS
UNI 125 SS
UNI 150 SS
UNI 200 SS



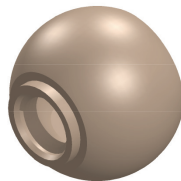
MARK 1 OR MARK 2 DOUBLE CLAMP SET
UNI 100 SS *plus* UNI 100 DW
UNI 125 SS *plus* UNI 125 DW
UNI 150 SS *plus* UNI 150 DW
UNI 200 SS *plus* UNI 200 DW



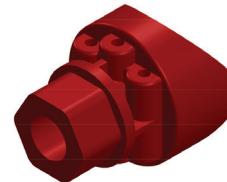
MARK 1 OR MARK 2 O-RING
UNI ODM EPDW
UNI OVT VITON



NOZZLE TIP
SEE PAGES 11 and 14



THREADED BALL
SEE PAGE 14



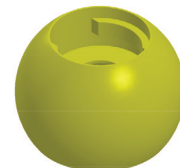
MARK 2 ADAPTER BODY
UNI 100 M2 B
UNI 125 M2 B
UNI 150 M2 B
UNI 200 M2 B



MARK 3 ASSEMBLY BASE
SEE PAGES 8 and 9



QUICK CHANGE TIP
SEE PAGES 12 and 13



QUICK CHANGE BALL
SEE PAGES 12 and 13