



THE
SPRAY NOZZLE
PEOPLE

XAPF

Pressure-fed
Internal Mix
Flat Fan



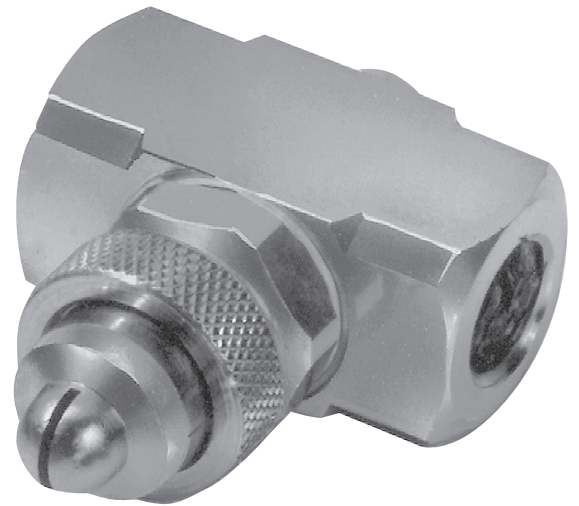
AIR ATOMISING

DESIGN FEATURES

- ✓ Requires pressurised air and fluid to operate
- ✓ Internal mix
- ✓ Modular design allows swapping between nozzle type by changing air and fluid caps
- ✓ Different body options with variable inlet orientations
- ✓ Adaptor for mounting the nozzles through walls
- ✓ Optional air shut off system
- ✓ Optional clean out pins

SPRAY CHARACTERISTICS

- ✓ **Spray pattern: Flat Fan**
- ✓ **Spray angles: 80° to 90°**
- ✓ **Flow rates: 1-140 l/hr**
- ✓ **Very fine atomisation**
- ✓ **Moderate forward spray projection**



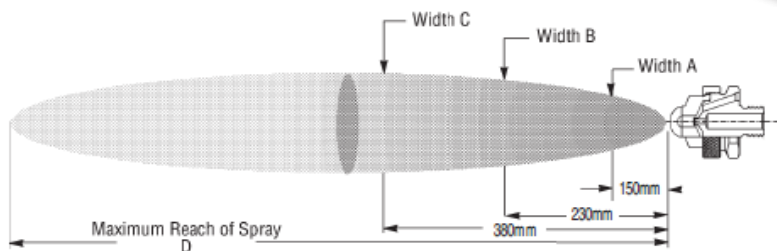
The XAPF air atomising nozzle produces a very finely atomised flat fan spray pattern. The internal mix design ensures the maximum level of droplet atomisation. These spray characteristics means that it is used in a variety of applications including:

Spray Coating
Moistening
Lubrication
Drum Coating
And more.

CALL NOW : +44 (0) 1273 400092

www.spray-nozzle.co.uk

The Go-to People for spray nozzle solutions



XAPF Set-up Flow Rates and Dimensions

Pressure-fed, Internal Mix, Flat Fan Spray Pattern, 1/8" and 1/4" Pipe Sizes, BSP or NPT

Standard materials: Nickel-plated Brass, 303 and 316 Stainless Steel

| Set-up No. | Fluid & air cap No. | 0.7 Bar Liquid | | 0.15 Bar Liquid | | | 2.0 Bar Liquid | | | 3.0 Bar Liquid | | | 4.0 Bar Liquid | | | Pressure (Bar) | | Spray Dimensions | | | | |
|------------|---------------------|----------------|-------------|---------------------|---------|-------------|---------------------|---------|-------------|---------------------|---------|-------------|---------------------|---------|-------------|---------------------|-----|------------------|-----|-----|-----|-----|
| | | Air bar | l/h | Nm ³ /hr | Air bar | l/h | Nm ³ /hr | Air bar | l/h | Nm ³ /hr | Air bar | l/h | Nm ³ /hr | Air bar | l/h | Nm ³ /hr | Air | Liquid | A | B | C | D |
| | | mm | mm | mm | mm | mm | mm | mm | mm | mm | mm | mm | mm | mm | mm | mm | mm | mm | mm | mm | mm | mm |
| PF050 | FC4 & AC1301 | 0.9 | 4.7 | 1.62 | 1.5 | 7.7 | 2.16 | 2.2 | 7.5 | 2.82 | 3 | 10.1 | 3.36 | 4.6 | 9.7 | 4.86 | 1.1 | 0.7 | 250 | 360 | 460 | 2.6 |
| | | 1 | 4.1 | 1.86 | 1.8 | 6.5 | 2.52 | 2.5 | 6.2 | 3.12 | 3.2 | 9.1 | 3.72 | 5.3 | 7.5 | 5.58 | 2.1 | 1.5 | 360 | 480 | 660 | 3.0 |
| | | 1.1 | 3.5 | 2.04 | 2.1 | 5.4 | 2.82 | 2.8 | 5.2 | 3.42 | 3.5 | 8.1 | 3.96 | 6 | 5.3 | 6.24 | 2.8 | 2.0 | 380 | 530 | 760 | 3.2 |
| | | 1.3 | 3 | 2.22 | 2.4 | 4.3 | 3.12 | 3.1 | 4.2 | 3.78 | 4.2 | 5.4 | 4.74 | 6.3 | 4.3 | 6.6 | 3.5 | 3.0 | 470 | 610 | 860 | 3.4 |
| | | 1.4 | 2.5 | 2.4 | 2.7 | 3.3 | 3.42 | 3.2 | 3.7 | 3.9 | 4.6 | 4.2 | 5.1 | 6.7 | 3.3 | 6.96 | 6 | 4.0 | 560 | 740 | 940 | 4.0 |
| PF100 | FC3 & AC1303 | 1.5 | 2 | 2.64 | 2.8 | 2.8 | 3.6 | 3.4 | 3.2 | 4.08 | 4.9 | 3.1 | 5.46 | 7 | 2.4 | 7.32 | 1.3 | 0.7 | 250 | 330 | 460 | 1.8 |
| | | 1.3 | 3.9 | 1.8 | 2.1 | 7.4 | 2.4 | 3 | 6.1 | 3.12 | 3.9 | 9.4 | 3.6 | 5.3 | 10.2 | 4.68 | 1.5 | 0.7 | 250 | 330 | 460 | 1.8 |
| | | 1.4 | 3 | 1.98 | 2.4 | 5.3 | 2.7 | 3.1 | 5.3 | 3.24 | 4.2 | 7.2 | 4.02 | 5.6 | 8.3 | 5.04 | 2.7 | 1.5 | 360 | 510 | 690 | 2.0 |
| | | 1.5 | 2.3 | 2.1 | 2.5 | 4.4 | 2.82 | 3.2 | 4.5 | 3.42 | 4.6 | 5.3 | 4.38 | 6 | 6.6 | 5.34 | 3.2 | 2.0 | 480 | 580 | 740 | 2.0 |
| | | 1.7 | 1.8 | 2.28 | 2.7 | 3.7 | 3 | 3.4 | 3.8 | 3.54 | 4.9 | 3.8 | 4.8 | 6.3 | 5.1 | 5.88 | 4.2 | 3.0 | 610 | 740 | 940 | 2.1 |
| PF150 | FC3 & AC1301 | 1.8 | 1.3 | 2.46 | 2.8 | 3.1 | 3.12 | 3.5 | 3.2 | 3.72 | 3.9 | 1.8 | 4.08 | 2 | 1 | 2.64 | 5.6 | 4.0 | 640 | 760 | 970 | 2.3 |
| | | 2 | 1 | 2.64 | 3 | 2.6 | 3.3 | 3.9 | 1.8 | 4.08 | 3.1 | 2.1 | 3.42 | 1 | 0.9 | 1.2 | 1.4 | 140 | 130 | 170 | 3.0 | |
| | | 1.1 | 8.2 | 1.2 | 1.4 | 14.4 | 1.62 | 2.1 | 13.5 | 2.16 | 2.7 | 19.1 | 2.52 | 4.6 | 16.1 | 4.14 | 1.1 | 0.7 | 360 | 460 | 710 | 2.1 |
| | | 1 | 6.8 | 1.38 | 1.7 | 11.9 | 1.92 | 2.4 | 11.4 | 2.52 | 3 | 17.1 | 2.76 | 4.9 | 13.8 | 4.56 | 2.1 | 1.5 | 430 | 610 | 810 | 2.4 |
| | | 1.1 | 5.5 | 1.62 | 2 | 9.5 | 2.22 | 2.7 | 9.2 | 2.82 | 3.2 | 15.1 | 3.12 | 5.3 | 11.5 | 4.98 | 3 | 2.0 | 510 | 660 | 890 | 2.6 |
| PF200 | FC3 & AC1302 | 1.3 | 4.1 | 1.8 | 2.1 | 8.3 | 2.4 | 3 | 7.1 | 3.18 | 3.5 | 13.1 | 3.42 | 5.6 | 9.3 | 5.4 | 3.5 | 3.0 | 580 | 760 | 970 | 2.7 |
| | | 1.4 | 2.9 | 2.04 | 2.2 | 7.1 | 2.58 | 3.2 | 5 | 3.54 | 4.2 | 8.1 | 4.32 | 6 | 7.3 | 5.82 | 5.6 | 4.0 | 580 | 760 | 970 | 3.2 |
| | | 2.4 | 6.1 | 2.76 | 3.4 | 4 | 3.78 | 4.6 | 5.9 | 4.74 | 6.3 | 5.6 | 6.24 | 2.5 | 5.1 | 2.94 | 4.2 | 0.7 | 100 | 130 | 170 | 3.0 |
| | | 2.5 | 5.1 | 2.94 | 3.5 | 3.3 | 3.96 | 4.9 | 4 | 5.16 | 6.7 | 4.3 | 6.72 | 1 | 9 | 1.5 | 2 | 100 | 130 | 170 | 3.0 | |
| | | 1 | 9 | 1.5 | 2 | 10.4 | 2.46 | 2.4 | 11.6 | 2.88 | 3.1 | 15.6 | 3.36 | 4.2 | 17.1 | 4.38 | 1.4 | 0.7 | 100 | 130 | 170 | 3.0 |
| PF250 | FC2 & AC1304 | 1.1 | 7.8 | 1.8 | 2.1 | 9.3 | 2.7 | 2.5 | 10.4 | 3.06 | 3.2 | 14.6 | 3.54 | 4.6 | 15 | 4.8 | 2.5 | 1.5 | 130 | 150 | 200 | 3.7 |
| | | 1.3 | 6.6 | 1.92 | 2.2 | 8.2 | 2.88 | 2.7 | 9.4 | 3.24 | 3.4 | 13.7 | 3.72 | 4.9 | 12.8 | 5.22 | 3.2 | 2.0 | 130 | 170 | 220 | 4.0 |
| | | 1.4 | 5.2 | 2.16 | 2.5 | 6.1 | 3.3 | 3 | 7.3 | 3.66 | 3.8 | 10.8 | 4.26 | 5.3 | 11 | 5.64 | 3.8 | 3.0 | 150 | 220 | 280 | 4.2 |
| | | 1.7 | 3.1 | 2.64 | 2.8 | 4.3 | 3.72 | 3.2 | 5.5 | 4.08 | 4.2 | 8.5 | 4.92 | 5.6 | 9.4 | 6.18 | 5.3 | 4.0 | 200 | 250 | 330 | 4.8 |
| | | 2 | 2 | 3 | 3.1 | 3 | 4.14 | 3.5 | 4.1 | 4.5 | 4.9 | 5.2 | 5.88 | 6.3 | 7.2 | 7.14 | 5.3 | 4.0 | 200 | 250 | 330 | 4.8 |
| PF300 | FC1 & AC1304 | 2.2 | 1.1 | 3.36 | 3.4 | 2 | 4.5 | 3.8 | 2.9 | 4.86 | 6 | 2.3 | 7.2 | 7 | 6.1 | 8.04 | 1.1 | 0.7 | 180 | 230 | 300 | 3.4 |
| | | 1.1 | 11.2 | 3.24 | 2.1 | 18 | 4.74 | 2.7 | 19.6 | 5.58 | 3.5 | 27 | 6.72 | 4.6 | 33 | 8.22 | 1.4 | 0.7 | 150 | 180 | 200 | 3.0 |
| | | 1.3 | 8.5 | 3.6 | 2.2 | 15.8 | 5.04 | 2.8 | 17.3 | 5.88 | 3.7 | 25 | 6.96 | 4.9 | 28 | 8.94 | 2.4 | 1.5 | 230 | 280 | 330 | 3.2 |
| | | 1.4 | 6.5 | 3.9 | 2.4 | 13.6 | 5.34 | 3 | 15.2 | 6.18 | 3.8 | 23 | 7.26 | 5.3 | 24 | 9.66 | 3 | 2.0 | 250 | 330 | 400 | 3.4 |
| | | 1.5 | 5 | 4.26 | 2.5 | 11.6 | 5.7 | 3.1 | 13.2 | 6.54 | 3.9 | 21 | 7.56 | 5.6 | 19.7 | 10.4 | 3.7 | 3.0 | 300 | 380 | 460 | 3.5 |
| PF350 | FC1 & AC1305 | 1.7 | 3.8 | 4.62 | 3.2 | 11.4 | 6.84 | 4.1 | 18.9 | 6.84 | 4.1 | 18.9 | 7.92 | 6 | 15.7 | 11.2 | 5.3 | 4.0 | 330 | 410 | 480 | 4.0 |
| | | 1.1 | 27 | 1.98 | 1.8 | 38 | 3.3 | 2.4 | 39 | 4.02 | 3.2 | 58 | 4.56 | 4.6 | 59 | 6.36 | 1.1 | 0.7 | 180 | 230 | 300 | 3.4 |
| | | 1 | 20 | 2.28 | 2.1 | 28 | 3.96 | 2.7 | 30 | 4.62 | 3.5 | 47 | 5.22 | 5.3 | 40 | 7.92 | 2.4 | 1.5 | 230 | 300 | 410 | 3.5 |
| | | 1.1 | 15.9 | 2.7 | 2.2 | 24 | 4.26 | 3 | 24 | 5.22 | 3.8 | 38 | 5.82 | 5.6 | 32 | 8.7 | 2.4 | 1.5 | 230 | 300 | 410 | 3.5 |
| | | 1.3 | 12.5 | 2.88 | 2.4 | 21 | 4.56 | 3.2 | 17.8 | 5.88 | 3.9 | 34 | 6.18 | 6 | 26 | 9.48 | 3.2 | 2.0 | 250 | 330 | 430 | 3.7 |
| PF400 | FC5 & AC1305 | 1.4 | 10.2 | 3.36 | 2.5 | 17.8 | 4.92 | 3.4 | 15.1 | 6.18 | 4.2 | 27 | 6.78 | 6.3 | 20 | 10.3 | 3.9 | 3.0 | 300 | 380 | 480 | 3.8 |
| | | 1.5 | 7.6 | 3.72 | 2.7 | 15.1 | 5.22 | 3.5 | 12.9 | 6.54 | 4.6 | 20 | 7.56 | 6.7 | 15.9 | 11.1 | 6.0 | 4.0 | 330 | 410 | 510 | 4.4 |
| | | 3.7 | 10.6 | 6.84 | 4.9 | 14.8 | 8.4 | 7 | 12.7 | 11.9 | 1 | 29 | 5.4 | 1.8 | 56 | 7.02 | 2.1 | 0.7 | 180 | 200 | 250 | 3.4 |
| | | 1 | 17 | 1.38 | 2 | 24 | 2.64 | 2.4 | 28 | 3.06 | 3.4 | 38 | 4.32 | 3.9 | 65 | 4.5 | 1.1 | 0.7 | 100 | 130 | 150 | 2.4 |
| | | 1.1 | 11 | 1.62 | 2.1 | 18.9 | 3 | 2.5 | 23 | 3.54 | 3.5 | 33 | 4.8 | 4.2 | 53 | 5.34 | 2.1 | 1.5 | 100 | 130 | 170 | 3.0 |